

Transport Quality Manual

Chapter 6. Container Transportation

Issue 11 – August 2011



Contents

- 6.1. Transportation by Container
- 6.2. Container Equipment
- 6.3. Preparation of Containers Prior to Loading and Unloading
- 6.4. Loading Vehicles to Container
 - 6.4.1. Product Familiarisation
 - 6.4.2. Vehicle Loading
- 6.5. Securing the Vehicles in the Container
 - 6.5.1. Lashing and Chocking Process Schematic
- 6.6. Removing Lashings and Unloading the Vehicles

Transport Quality Manual

Chapter 6. Container Transportation



Issue 11 – August 2011

6.1. Transportation by Container

JLR Vehicles may only be transported in containers which have been assessed for suitability by contracted party and are fit for purpose.

All Containers should meet international ISO Standards and be inspected and condition checked prior to use.

JLR reserve the right to inspect/audit any container carrying JLR product and to refuse carriage on any container that does not meet the contracted terms within the (SL) Service Level or JLR Transport Quality Standards.

6.2. Container Equipment

- General purpose (GP) container for non perishable products, fitted with a timber floor. Always use enclosed, ventilated 20' or 40' standard
- No major impact distortion, which would alter internal dimensions or fit of doors
- No holes compromising the containers watertight standard, from damage, impact or corrosion
- Door seals are to be complete, in place and undamaged
- Doors to open and close completely and sealing the container doors fully when secured
- Containers are to be clean, free from debris, dry and free of odours
- Container vents are to be cleared and free from obstruction as this is important for air flow for container ventilation
- Vehicle chocks (Metal Type x 1 required for each wheel)
- Cordless power screwdriver
- 30mm Self tapping treated non corrosive screws (x 2 per chock)
- Lashing straps (only use lashings or ratchet straps that are approved and conform to industry/ISO standards)



JLR preferred container chock



JLR preferred 30mm self tapping cross head screws

Transport Quality Manual

Chapter 6. Container Transportation



Issue 11 – August 2011

6.3. Preparation of Containers Prior to Loading and Unloading

- Open container and inspect that it is up to the required ISO standard
- Set up ramp to required position (8° max)
- Ensure container floor is free from loose items or debris

6.4. Loading Vehicles into Container

6.4.1. Product Familiarisation

- The following is to be used in conjunction with chapter 1.3 (Vehicle Handling)
- The service provider/consigner must undertake suitable product familiarisation training for all personnel loading or unloading JLR product
- Third party sub contracted providers must operate to the same standard as the principal
- All vehicles must be loaded/unloaded at a slow controlled speed
- Loading and discharge of vehicles must be supervised and co-ordinated by experienced load superintendents or supervisor, who should attend during the whole period of the loading

6.4.2. Vehicle Loading

- Check all vehicle VIN numbers to VIN plate to ensure accuracy before loading commences
- Drive vehicle carefully up the ramp under supervision
- Load Vehicle into position in the container under supervision

Once vehicle is in location:

- Apply handbrake
- Leave vehicle park or 1st gear
- Ensure front drivers door window is down approx 1" (25mm) for circulation of air
- All other windows should be fully closed
- Remove key (If not in transit bag) and put in envelope
- Carefully exit the vehicle
- Stow key envelope on windscreen under wiper blade arm

Gaps between vehicles and between vehicles and container walls must be at least:

- 20cm from container wall to passenger side of vehicle
- 50cm from bumper to bumper or from bumper to end of container

Transport Quality Manual

Chapter 6. Container Transportation



Issue 11 – August 2011

6.5. Securing the Vehicles in the Container

- All vehicles to be loaded and secured as below expect the Range Rover Evoque handling guide (ref Appendix 5)
- The Jaguar XKRS2 can only be reversed loaded into the container due to clearance on the front end of the vehicle
- See Chapter 3.3 for the correct vehicle specific lashing process
- Lashing through the wheel is not permitted on JLR product



Using metal chocks, screws and power screwdriver...

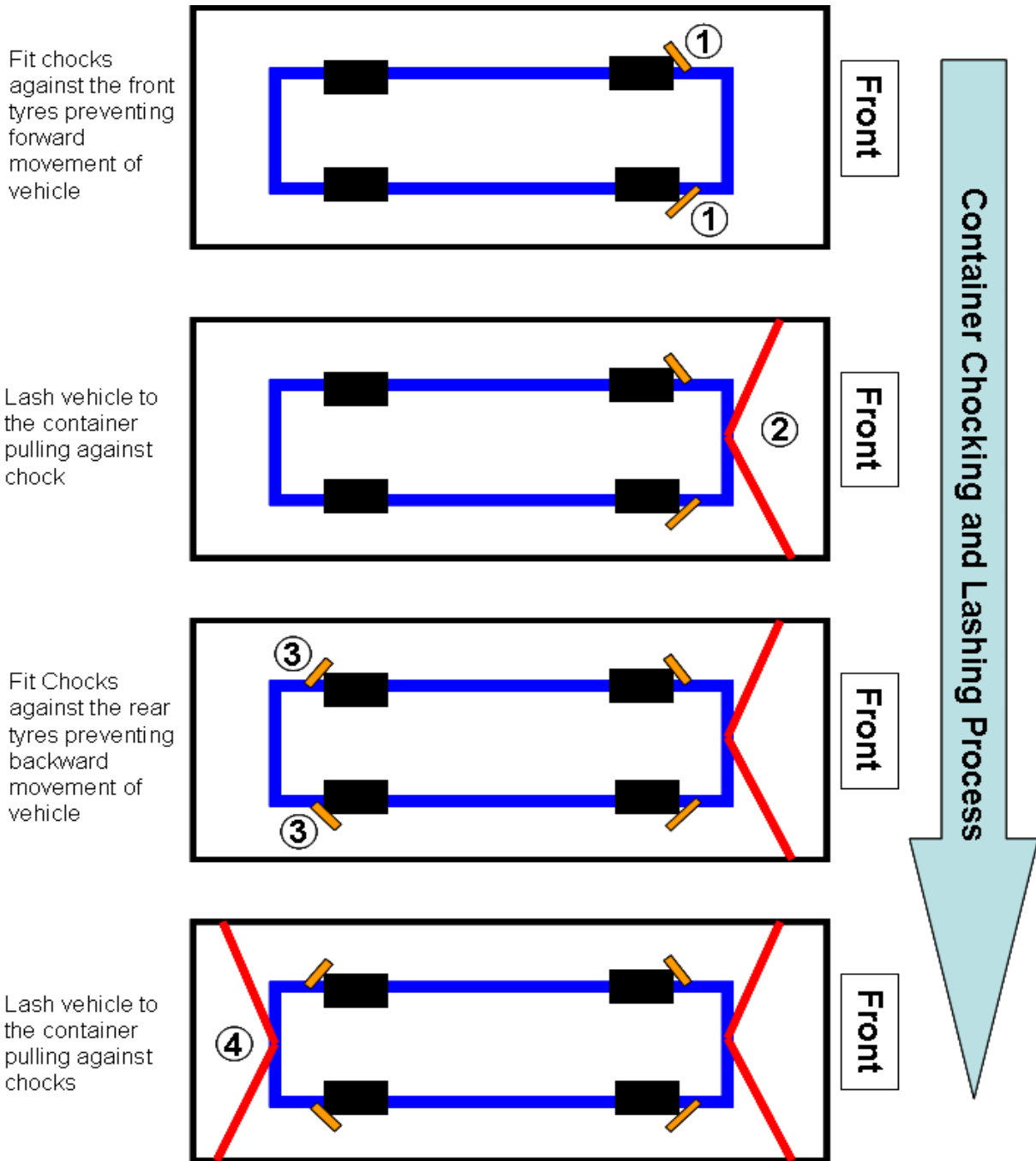


...secure metal chock to container floor.



Once chocked ensure vehicle is correctly lashed

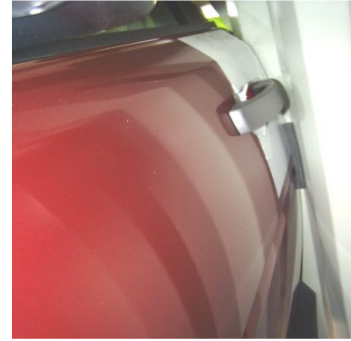
6.5.1. Lashing and Chocking Process Schematic



Transport Quality Manual

Chapter 6. Container Transportation

Issue 11 – August 2011



- Following the correct securing of the cars, all the positioning and lashing tensions is to be checked for conformity by the load supervisor and corrected before container is closed and sealed
- Take care exiting the vehicle as space is significantly confined and there is an increased risk of drivers door edge damage
- Once Vehicles are secured seal up the container and secure doors.

6.6. Removing Lashings and Unloading the Vehicles

- Inspect the vehicle
- Remove all lashings carefully from the vehicle
- Remove chocks
- Enter the vehicle carefully and go through starting procedure
- Drive the vehicle off supervised and in a slow controlled manner