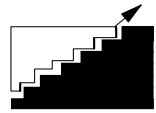




Single Point Lesson



Plant: Halewood _____ Page 1__ of _2_.

F.T.P.M

TOPIC : Operation of vehicle in Transport mode – L538 12MY

When the vehicle is in transport mode, has a transit relay fitted or if there is a problem with the passive start, a message will be displayed in the instrument pack **'Smart Key Not Found Refer to Handbook.'** When this message is displayed, the following steps need to be carried out to get ignition on or to start the vehicle.

Location of IAU:

Refer to attached images.

Operation to get Ignition ON.

1. Place key with buttons facing operator as shown in attached images.
2. Press the start button, **'Smart Key Not Found Refer to Handbook'** message will be displayed
3. Press start button again whilst this message is being displayed. Message should extinguish and Ignition should be ON.

Operation to Start Vehicle.

1. Repeat steps 1 and 2 above.
2. Depress Brake pedal and Press start button again whilst this message is being displayed. Message should extinguish and Vehicle should start.

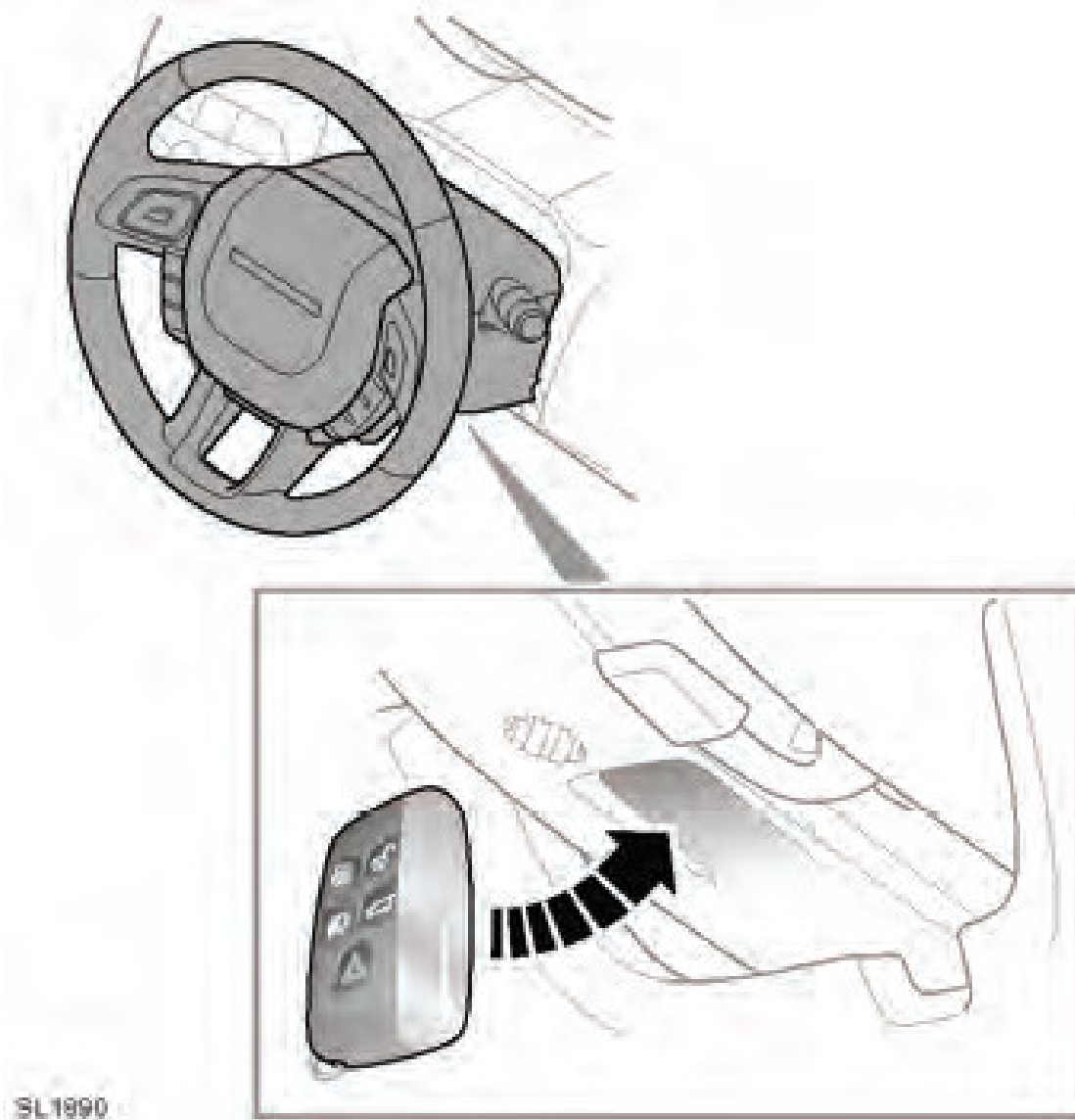
Master to be held by S.G.A. Controlled copy held in area managers file.
Any other copies will be marked 'Uncontrolled Copy'.

Date: 15 th June 2011
Issue Level: 1
Originator: Roger Birch
Dept: Electrical

TOPIC : Operation of vehicle in Transport mode.

Ref 2:- L538 (Range Rover Evoque)

1



Date: 15 th June 2011
Issue Level: 1
Originator: Roger Birch
Dept: Electrical

Master to be held by S.G.A. Controlled copy held in area managers file.
Any other copies will be marked 'Uncontrolled Copy'.