

# Transport Quality Manual Addendum to Issue 11



## Bulletin: 08

Issued: 19<sup>th</sup> January 2012

### JLR Outbound Transportation Quality Outbound Distribution

#### **Bulletin 08: X150 (XK) Key Docking**

Reference: SSM42328  
Model: X150 (XK)  
Title: XK (12my) Smart Key Stuck in SCU (Starter Control Unit)  
Category: Body  
Last modified: 16-Jan-2012 00:00:00  
Symptom: 112000 Latches/Locks & Security

#### **Concern:**

With the transit relay fitted it is possible for the smart key to become trapped in the SCU (Starter Control Unit) with no ignition or crank.

#### **Cause:**

When the driver's door is opened the transit relay is energised for approximately 11 – 15 seconds. Docking the smart key within the first 10 seconds will enable normal operation (ignition on, crank etc). If however the smart key is inserted into the SCU towards the latter stages of the time out sequence it is possible for the smart key to miss the ignition authorisation command and become trapped in the SCU.

#### **Action:**

Should the above issue occur, under no circumstances should force be applied to remove the smart key from the SCU, as this will cause permanent damage to the unit. Following the instructions below will re-energise the transit relay thus enabling normal operation:-

- Ensure the boot and bonnet are closed
- Sit in driver's seat and ensure doors are closed
- Turn the sidelights on
- Wait for the instrument cluster to enter sleep mode [Indicated when the green sidelight tell-tale extinguishes]
- Switch the sidelights off, then on again
- This will initiate the cluster key authorisation schedule and allow either ignition on or smart key removal

#### **Additional Information:**

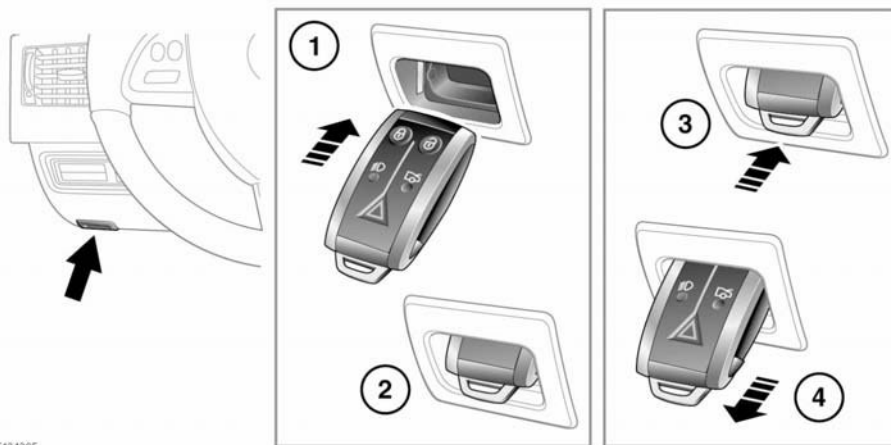
Following are 2 guidelines on key usage for the X150 and X250

## Starting the engine

### IF THE ENGINE FAILS TO START

If the brake pedal has been pumped prior to an attempt to start the engine, it may require greater pressure on the pedal in order for the engine to start.

If the Jaguar Smart Key is placed in the door pocket, it may be outside the range of the sensors when the door is open.



E134395

If the Smart Key fails to operate, **Smart Key Not Found- Refer to Handbook** is displayed in the message centre. To start the engine it will be necessary to dock the Smart Key, as follows:

1. Insert the Smart Key fully into the starter control unit, as shown.  
**Note:** When docking the Smart Key, it is recommended that the emergency key blade is left in place. The end of the blade can then be used as a handle, to pull the Smart Key from the control unit when undocking.
2. Ensure the Smart Key is securely docked, then press and release the START/STOP button with the brake pedal applied to start the engine.

3. To undock the smart key, ensure that the gear selector is in the **P** position and the ignition is switched off, then press and release the Smart Key. The Smart Key will eject from the starter control unit.

**!** Ensure that the ignition is switched off before undocking the Smart Key, otherwise damage to the Smart Key may occur.

4. Remove the Smart Key.


If the engine still fails to start, seek qualified assistance.

# Keys and remote controls

## LOCKING AND ARMING THE VEHICLE

### CAUTION

! The vehicle will only lock, if all door, luggage compartment and bonnet apertures are closed. If a lock attempt is made when an aperture is open, the vehicle will not lock and two audible error warnings will sound.

 Press and release the lock button to lock the vehicle and arm the alarm. The doors are prevented from being opened from outside of the vehicle. The doors can be unlocked and opened from inside the vehicle. The hazard warning lamps will flash once as confirmation.

Press the lock button twice within three seconds to double-lock all the doors and set the alarm system to provide the highest level of security - use this method whenever possible.

**Note:** When the vehicle is double locked, the interior door handles are immobilised.

### WARNING

! Never double-lock the vehicle when someone is to remain inside the vehicle. In an emergency, they would not be able to open the doors.

### Global close

Press and hold the lock button to close all the windows on the vehicle.

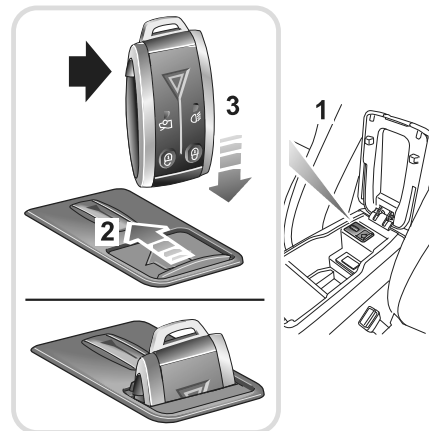
### Automatic relocking

If a door or the luggage compartment are not opened within 40 seconds of unlocking the vehicle using the Jaguar Smart Key, the doors will lock again automatically. This feature can be enabled/disabled using the touch-screen. See **PROGRAMMING THE REMOTE CONTROL** (page 20).

## DOCKING/UNDOCKING THE JAGUAR SMART KEY

### Docking the Jaguar Smart Key

During normal operation, it is not necessary to dock the Jaguar Smart Key. However, if the unlock button on the Smart Key fails to operate and the vehicle has been unlocked using the emergency key blade, it will be necessary to dock the Jaguar Smart Key, to deactivate and disarm the alarm system.



JAG1350

1. Lift the lid of the centre console stowage compartment.
2. Slide open the cover of the starter control unit.
3. Insert the Jaguar Smart Key into the recess with the emergency key release button facing forward.

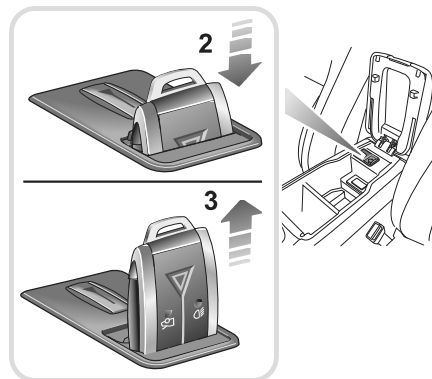
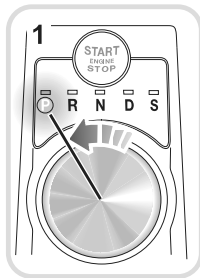
**Note:** This is not a Jaguar Smart Key internal battery recharging procedure. The battery is non-rechargeable.

## Keys and remote controls

### Undocking the Jaguar Smart Key

#### CAUTION

! Ensure the engine is switched off before undocking the Jaguar Smart Key, otherwise damage to the Smart Key may occur.



JAG1351

To remove the Jaguar Smart Key from the starter control unit:

1. Ensure that the vehicle is at rest with the gear selector in the **P** position and the engine not running.
2. Carefully depress the Jaguar Smart Key and release. The key will eject into its rest position.
3. Remove the Jaguar Smart Key from the starter control unit.

### Message centre information displays

Message	Meaning
SMART KEY NOT FOUND, PLEASE INSERT IN SLOT	The Jaguar Smart Key has not been detected, insert into the starter control unit.
CHECK SMART KEY	Check that the Jaguar Smart Key is in the vehicle.
WRONG SMART KEY FOUND	The Jaguar Smart Key detected by the in-vehicle systems is not the one belonging to the vehicle.
REMOVE SMART KEY	Remove the Jaguar Smart Key from the starter control unit.